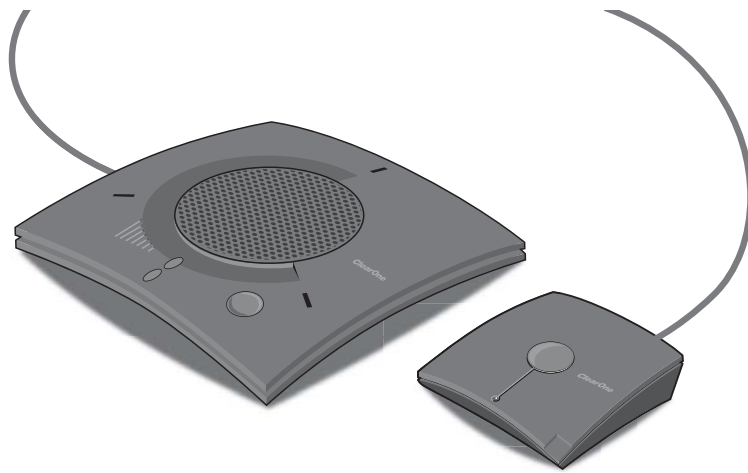


**ClearOne.**

CHAT™ 150 Group Speaker Phone

## QUICK START GUIDE



**CHAT™ 150** Group Speaker Phone

**TABLE OF CONTENTS**

Installing The Chat 150 Software .....	1
Configuring and Testing Your Chat 150 .....	2
Connecting Chat 150 to a PC .....	7
Connecting Chat 150 to a Telephone. ....	8
Connecting Chat 150 to a Video Conferencing Device. ....	13
Using The Chat 150 .....	17

## QUICK START GUIDE

### **INSTALLING THE CHAT 150 SOFTWARE (WINDOWS)**

1. Insert the Chat 150 CD into your computer's CD-ROM/DVD drive.

‣ **Note:** This procedure shows Windows XP screenshots. The installation instructions apply to both Windows XP and Windows Vista.

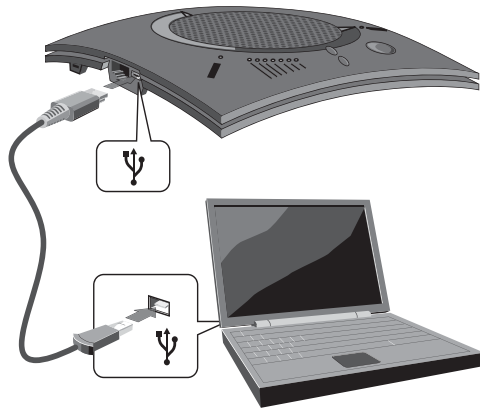
2. Follow the instructions in the **Setup Wizard** to complete installation of the Chat 150 software.

‣ **Note:** If you do not have the Chat 150 Installation CD, you can download the latest version of the software at <http://www.clearone.com/support/downloads.php?content=main>

**CHAT™ 150** Group Speaker Phone

**CONFIGURING AND TESTING YOUR CHAT 150**

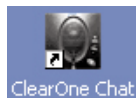
1. Using the included USB 2.0 cable, connect the Chat 150 to your PC (Figure 1.0).



**FIGURE 1.0**

## QUICK START GUIDE

2. Start the Chat 150 configuration software by double-clicking the **ClearOne Chat** icon on your desktop.



ClearOne Chat desktop icon

3. Click the **Device Setup** button.



Chat 150 Device Setup button

## CHAT™ 150 Group Speaker Phone

4. Select the type of device you are using with your Chat 150 in the **Select 1<sup>st</sup>** column (Figure 2.0).

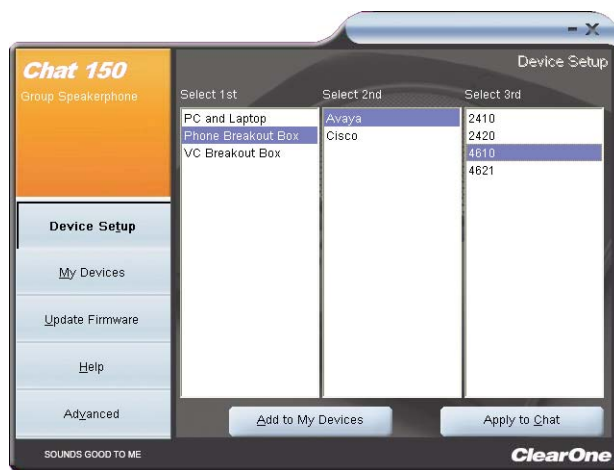
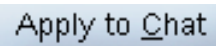


FIGURE 2.0

## QUICK START GUIDE

5. Select the manufacturer of your device in the **Select 2<sup>nd</sup>** column; select **Other** or **All**, if not listed
6. Select the model of your device in the **Select 3<sup>rd</sup>** column; select **Other** or **All**, if not listed. Once you select a model, the **Add to My Devices** and **Apply to Chat** buttons become active.
7. Click the **Apply to Chat** button to apply these audio settings to your Chat 150.



Chat 150 Apply to Chat button

8. You can now adjust the preconfigured audio setting and save the customized device setting using **My Devices**. Refer to the Chat 150 User's Manual for more information.

## CHAT™ 150 Group Speaker Phone

9. Connect your Chat 150 to the device you just configured for (see the specific connection instructions in the following paragraphs).
  - ▶ **NOTE:** When connecting to an analog device, you can leave the Chat 150 connected to your PC if you wish. (If you do, then you do not need to connect the power supply because the Chat 150 is being powered through the USB 2.0 cable.)
10. To ensure optimal sound quality, you need to customize the Chat 150's audio settings for every application and device you will use. Refer to the tuning procedures in the *Optimizing Sound Quality* section in the user manual.
11. If you wish to further adjust the Chat 150 audio settings for this device, refer to the *Chat 150 User's Manual* for more information.

## QUICK START GUIDE

### CONNECTING THE CHAT 150 TO A PC

1. Using the included USB 2.0 cable, connect the Chat 150 to your PC (Figure 3.0).

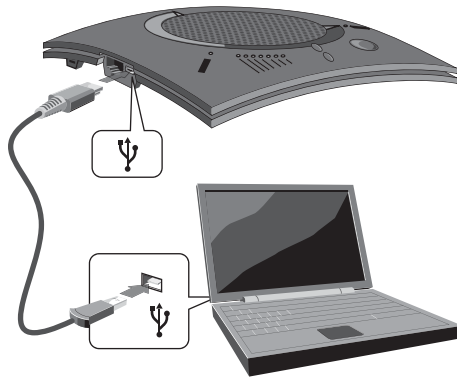


FIGURE 3.0

## CHAT™ 150 Group Speaker Phone

### CONNECTING THE CHAT 150 TO A TELEPHONE

Perform the following steps to connect your Chat 150 to a telephone:

1. Using the included 25' RJ-45 cable, connect the Phone Breakout Box to your Chat 150 (Figure 4.0).

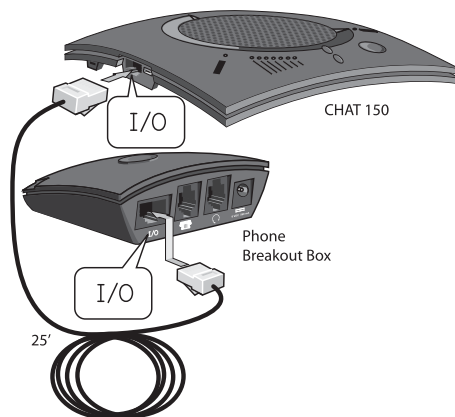


FIGURE 4.0

## QUICK START GUIDE

- Using the included 2' RJ-9 telephone cable, connect the Phone Breakout Box's **phone jack** to your telephone's **headset jack** (Figure 5.0)



**WARNING: DO NOT** plug the cable into the telephone's line jack, handset jack, or to phones other than those listed on your Chat 150 package labeling. Damage to the telephone and/or Chat 150 might occur.

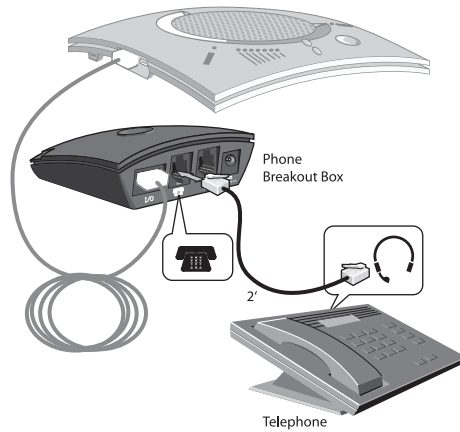


FIGURE 5.0

### CHAT™ 150 Group Speaker Phone

3. If you have a headset that you typically use with your telephone, connect it to the **headset jack** on the Chat 150 Phone Breakout Box (Figure 6.0).

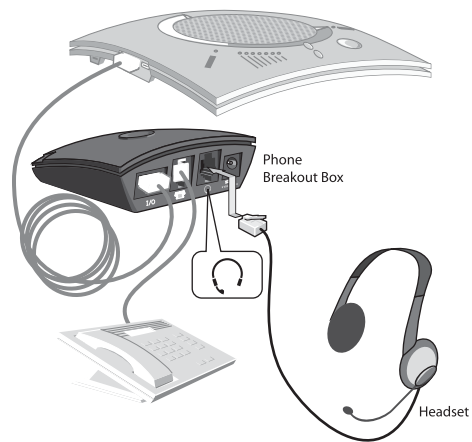


FIGURE 6.0

## QUICK START GUIDE

- Slide the correct power supply clip for your country into the included power supply (Figure 7.0). The power supply may contain a plastic shield that must be removed before inserting the clip.

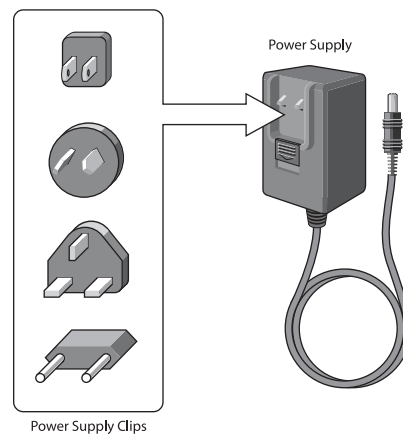


FIGURE 7.0

## CHAT™ 150 Group Speaker Phone

- Using the included power supply, connect the Chat 150 Phone Breakout Box to a power outlet (Figure 8.0).
- The blue LED indicators on the Chat 150 illuminate, indicating that it has power.
- Run the Chat software and configure the Chat 150 for use with your telephone by clicking on **Device Setup**. For detailed instructions, refer to the *Chat 150 User's Manual*.

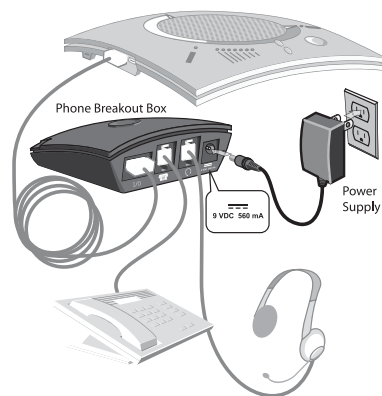


FIGURE 8.0

## QUICK START GUIDE

### CONNECTING THE CHAT 150 TO A VIDEO CONFERENCING DEVICE

Perform the following steps to connect your Chat 150 to a video conferencing device:

1. Using the included 25' RJ-45 cable, connect the Chat 150 VC Breakout Box to your Chat 150 (Figure 9.0).

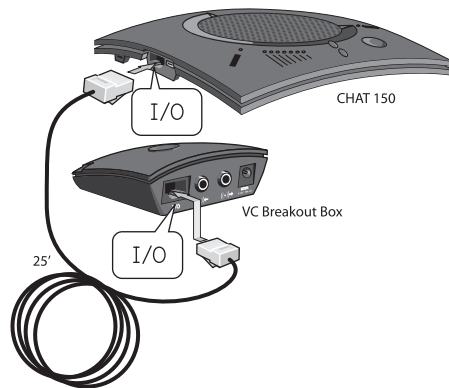


FIGURE 9.0

## CHAT™ 150 Group Speaker Phone

- Using the included 6' RCA audio cables, connect the VC Breakout Box's **audio in** port to your video conferencing device's **audio out** port, and the **audio out** port to your video conferencing device's **audio in** port (Figure 10.0). For more detailed instructions, refer to the *Chat 150 User's Manual*.

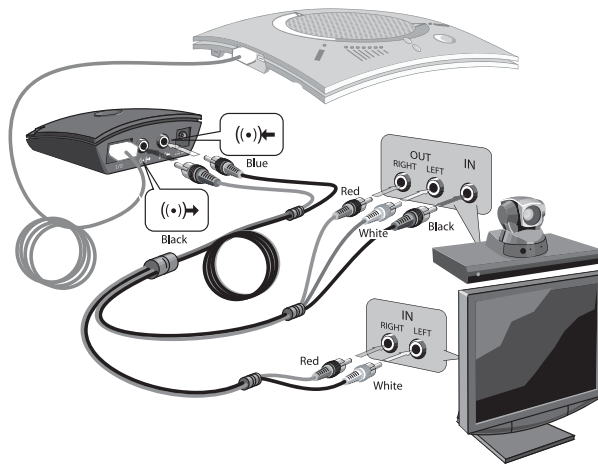


FIGURE 10.0

## QUICK START GUIDE

- Slide the correct power supply clip for your country into the included power supply (Figure 11.0). The power supply may contain a plastic shield that must be removed before inserting the clip.

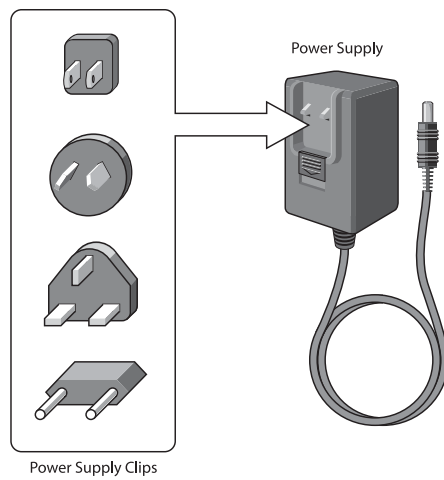


FIGURE 11.0

## CHAT™ 150 Group Speaker Phone

4. Using the included power supply, connect the Chat 150 VC Breakout Box to a power outlet (Figure 12.0).
5. The blue LED indicators on the Chat 150 illuminate, indicating that the Chat 150 has power.
6. Run the Chat software and configure the Chat 150 for use with your video conferencing device by clicking on **Device Setup**. For detailed instructions, refer to the *Chat 150 User's Manual*.

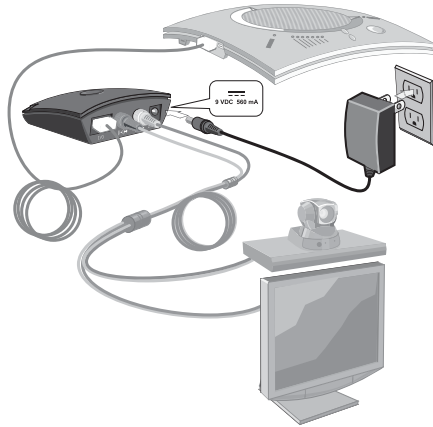


FIGURE 12.0

## QUICK START GUIDE

### USING THE CHAT 150

#### CHAT 150 LED Indicators

The three microphone LED indicators illuminate blue when the Chat 150 microphones are active. The indicators illuminate red when the microphones are muted.

The seven volume LED indicators illuminate blue to indicate the current volume setting—more lights indicate higher volume.

#### CHAT 150 Volume Up/Down & MUTE Buttons

Use the **Volume Up/Down** buttons (indicated by a large dot and a small dot) to adjust the volume level of the Chat 150. Holding down either button will change the volume rapidly.

Use the **Mute** button to mute the Chat 150's microphone until the **Mute** button is pressed again. If you are using the Chat 150 with a PC, you can also use the Speaker Volume Control in Windows, as well as the Chat 150 software to adjust the volume and mute the microphone.

## CHAT™ 150 Group Speaker Phone

### CHAT 150 PHONE BREAKOUT BOX

Press the **Headset** button on the phone breakout box to send audio from the phone to the headset connected to the Chat 150 Breakout Box. This will also disable audio going from the breakout Box to the Chat 150—it is only routed to the headset. The phone Breakout Box LED indicator illuminates, indicating that headset audio is activated. The Chat 150 LED indicators remain lit, although audio is not routed to the Chat 150 from the Breakout Box (USB audio is still active). Press the **Headset** button again to disable headset audio and reactivate audio from the Breakout Box to the Chat 150.

### CHAT 150 VC BREAKOUT BOX

Once you have properly connected the Chat 150 VC Breakout Box to your video conferencing device and TV using the included RCA Connection Cable, all settings changes such as mute, microphone and speaker level adjustments, etc., are controlled through the Chat 150 software.

The Breakout Box itself has no buttons and no functionality for making settings changes. It does have an LED light that indicates power to the device.

## QUICK START GUIDE

### CHAT 150 SOFTWARE

The Chat 150 includes software that has a database of pre-configured device settings, which allows you to instantly select and apply optimal audio settings for supported devices. It also allows you to create customized audio settings and save them as custom devices. To learn more about this software, refer to your *Chat 150 User's Manual*.

To download the latest version of the Chat 150 software, visit <http://www.clearone.com/support/downloads.php?content=main> and select **Chat 150** from the product drop-down list. Select the **Chat 50/150 Software** from the list to download the most current version of the Chat 150 software. For detailed installation instructions, refer to your *Chat 150 User's Manual*.



Caution: Read the Safety Information  
in the instruction manual

#### **TECHNICAL SUPPORT**

<b>TELEPHONE</b>	1.800.283.5936 1.801.974.3760
<b>FAX</b>	1.801.974.3669
<b>EMAIL</b>	tech.support@clearone.com

**U.S. PATENTS: D539,274; D556,189; D531,999.  
OTHER PATENTS PENDING.**